

Proposed Special Free School in the Selby area

Information for education providers
24th September 2019

Jane Harvey Strategic Planning and Development
Officer NYCC

Sarah Hill SEND Strategic Plan Implementation
Officer NYCC



Outline

Welcome and introductions

Why do we need a special school in the Selby area?

Information about the proposed school

Information about the planning and building process

Next steps

Questions

Why do we need a special school in Selby?

Our Strategic Plan

We want all children and young people with SEND in North Yorkshire to:

- have the best educational opportunities so they achieve the best outcomes;
- be able to attend a school or provision as close to their home as possible; and
- make progress with learning, have good social and emotional health and to be prepared for a fulfilling adult life.



Why do we need a special school in Selby?

More children and young people identified as having SEND

Increase across the county and also in the Selby area

No special school in the Selby area

Children and young people have to travel longer distances

Many children and young people attend more expensive placements

Special school in the Selby area

Selby support for the special free school

We need to form this special school, as a local hub of expertise, and to allow for appropriate and local provision for our children. (HT)

Establishing local, specialist provision would be a very positive move towards maintaining an inclusive approach for our children and young people with SEND (SDC)

My Daddy could pick me up. (C)

A school in Selby would significantly improve the children's lives by them having less time travelling and more time at home with families. (P/C)

If my school friends lived nearby it would be easier to build long lasting relationships. (YP)

What is a free school?

Free schools are state-funded academies. They are outside local authority control and are operated by academy trusts. They have more control over how they do things and don't have to follow the national curriculum.

Free schools are held accountable through OFSTED inspections and exam results.

What outcomes do we expect for children and young people?

- Aspirational progress/attainment outcomes
- Good progress in all areas of preparing for adulthood with local links
- Reduced travel time/anxiety → improved readiness to learn
- Parent/carers can have meaningful relationships with school
- Health needs met locally
- Community involvement
- Development of independence



The continuum of provision

Universal

Mainstream:

- Settings
- Schools
- Colleges
- FE providers

Targeted

- New model of targeted provision
- Pupil referral services
- Provision for medical needs

Specialist

- Special maintained schools and academies **(including free school)**
- Personalised learning pathways
- Supported internships

Who will attend the school?

The new school will educate children and young people with the following complex needs:

- communication and interaction needs (including Autism and speech, language and communication needs); and / or
- cognition and learning needs (moderate/severe learning difficulties)

Some children and young people may have related social, emotional and mental health needs but this will not be their primary need.

Age range: 3-19

Number of places:100

- 5 Nursery/Early Years
- 70 KS1-4
- 25 KS 5

Projected build up of pupils:

	Year of opening	+1	+2	+3	+4	+5	+6
Nursery	0	5	5	5	5	5	5
Reception	0	0	10	10	10	10	10
Key stage 1 (Y1 2)	10	10	15	15	15	15	15
Key stage 2 (Y3 6)	10	15	15	15	15	15	15
Key stage 3 (Y7 9)	10	15	15	15	15	15	15
Key stage 4 (Y10 11)	10	15	15	15	15	15	15
16 19: commissioner referred	0	15	25	25	25	25	25
Totals	40	75	100	100	100	100	100

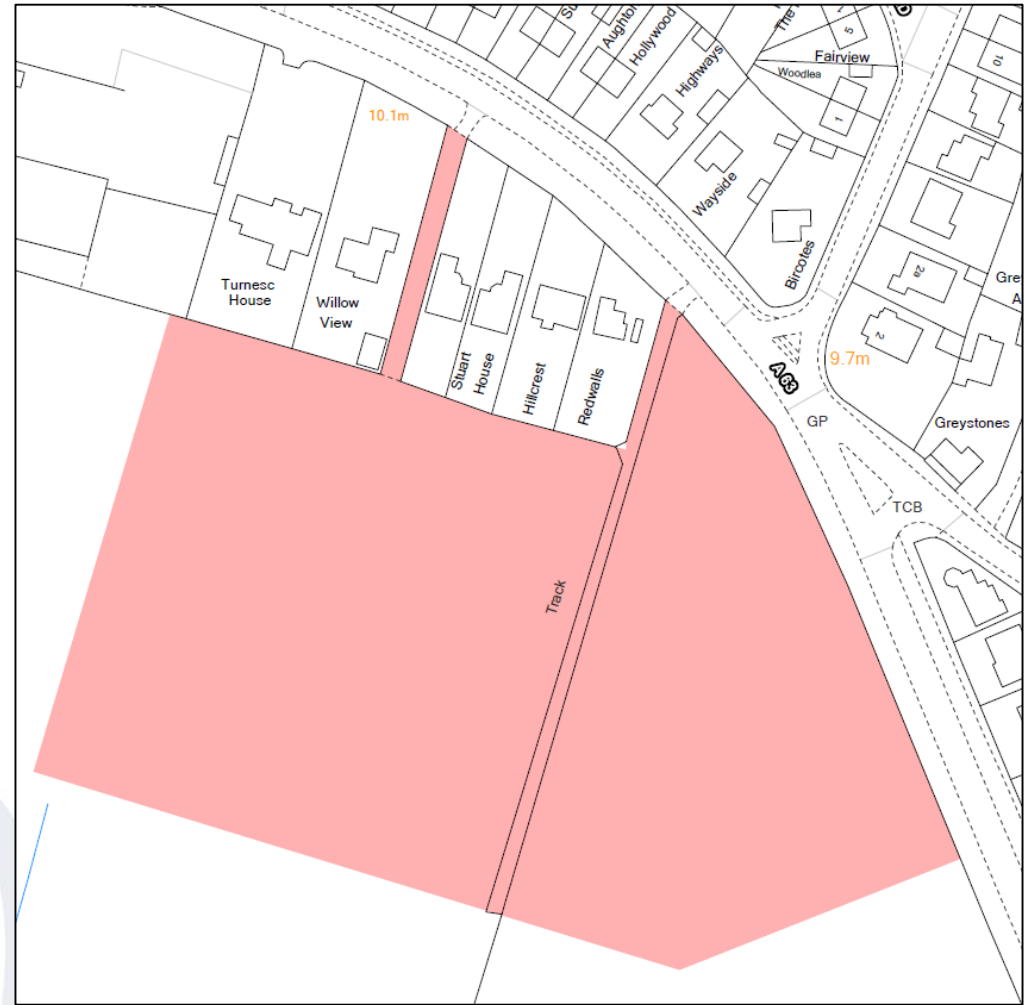
Designing and building the school



- DfE will design and build the school
- Selby District Council is the planning authority
- NYCC and the successful trust will work with the DfE
- When a contractor is appointed they will provide information and engage with the community
- No opening date yet – but not expected before September 2021

Why was the site at Osgodby chosen?

- Location – in or very close to Selby town
- Accessible – LA owned so less time and cost obtaining and making site available
- Flat
- Low flood risk
- Scope for separating vehicle and pedestrian access if required
- Best met requirements for the site

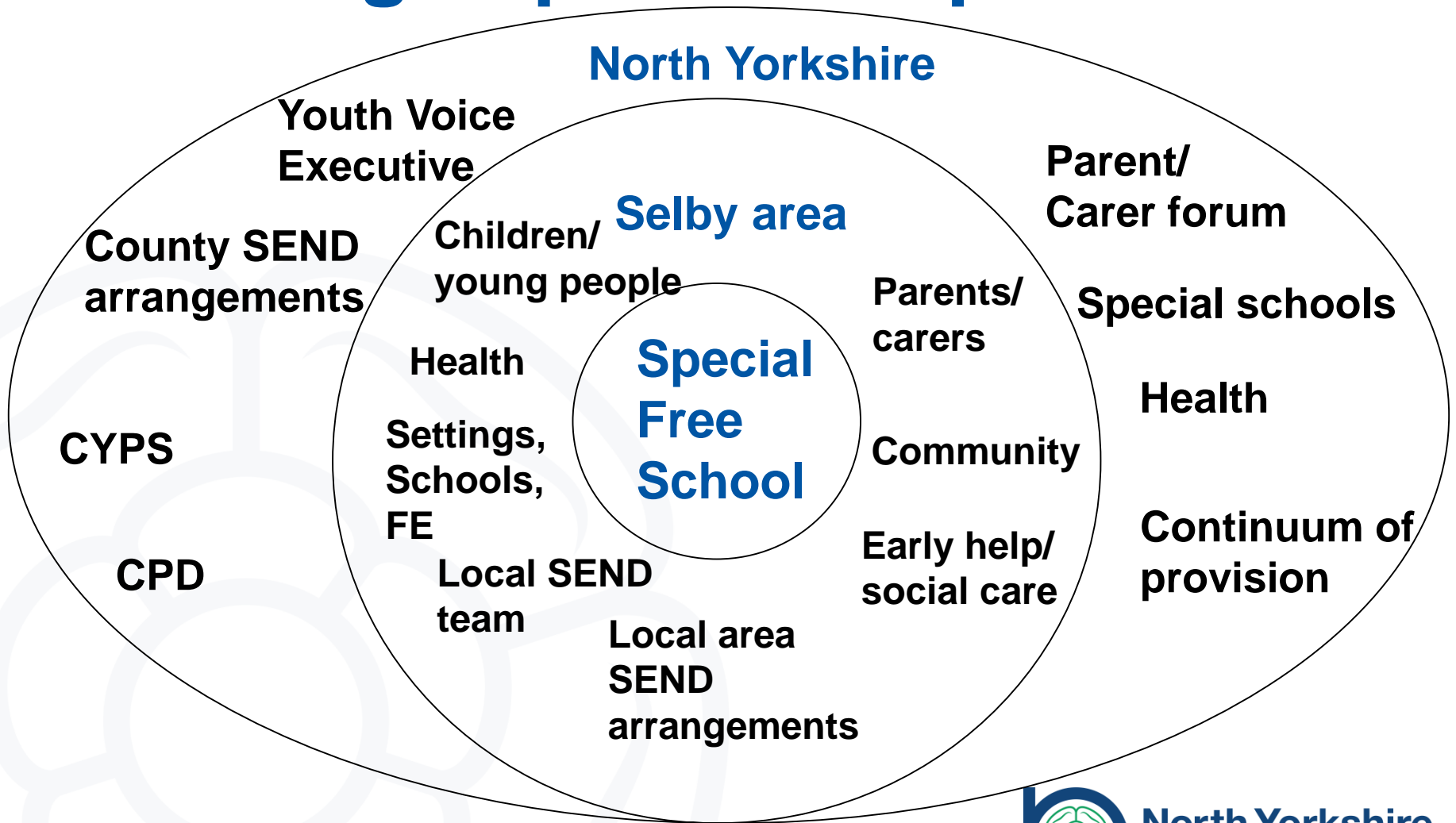


Parent/carers



- Parents/carers and community groups contributed to the bid for the school
- Ongoing communication via Parent Power and Bee-Able
- Parent/carer views have been provided to interested trusts

Working in partnership



Next steps

Midday 30th September 2019	Deadline for proposers to submit applications in successful areas.
September – December 2019	North Yorkshire County Council and DfE to evaluate submitted applications and interview trusts.
Early 2020	Approved applications announced.

Application and interview process – late 2019 / early 2020

- Range of stakeholders involved in decision making process – to include parents' voice, representation special and mainstream schools as well as local authority.
- Application, assessment and interview is a robust process through which Trusts have to demonstrate that they can effectively provide high quality education for these children.

More information

NYCC website

<https://www.northyorks.gov.uk/proposed-special-free-school-Selby>

DfE

<https://www.gov.uk/government/publications/special-free-school-applications>

Questions

