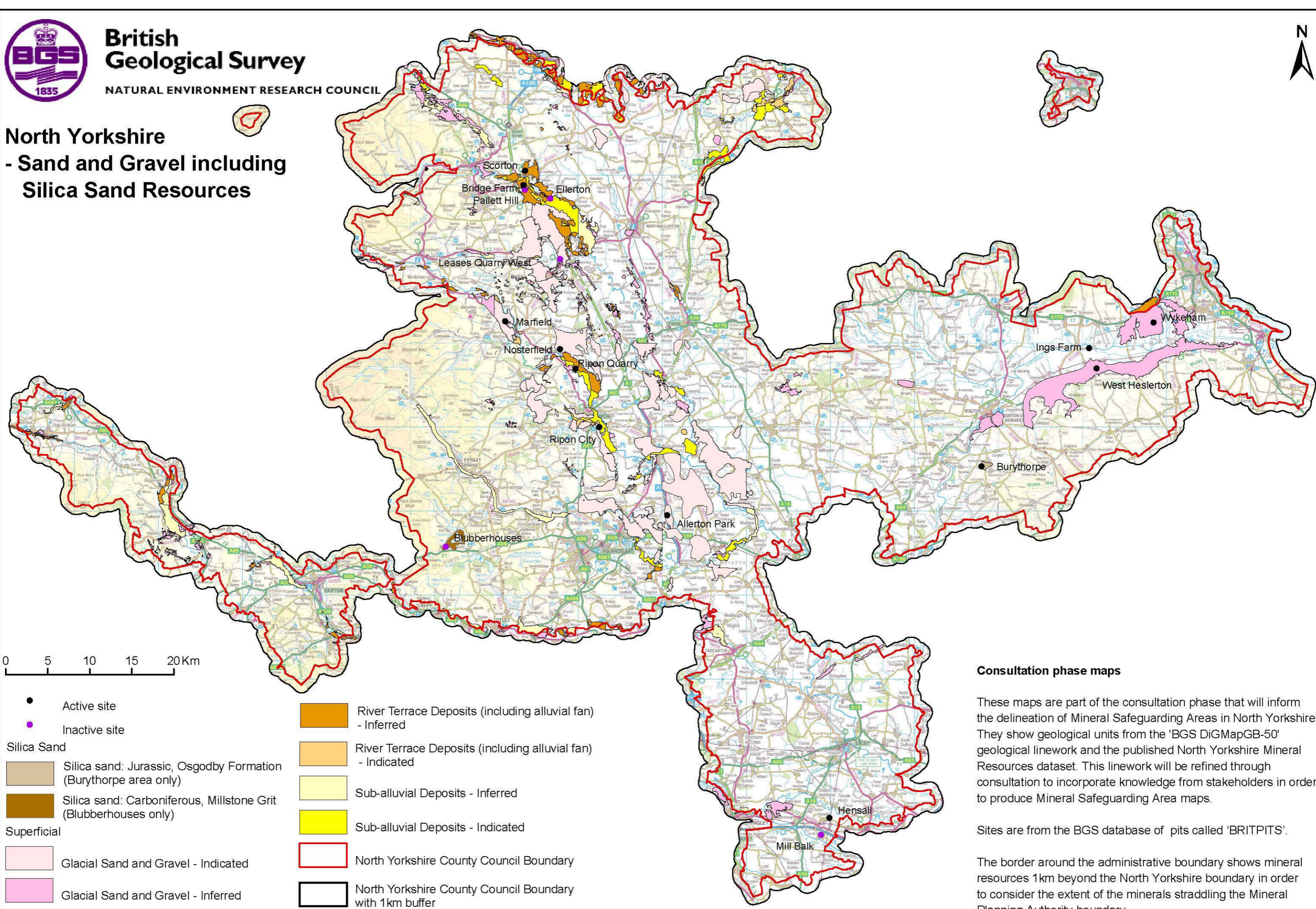




British Geological Survey

NATURAL ENVIRONMENT RESEARCH COUNCIL

North Yorkshire - Sand and Gravel including Silica Sand Resources



0 5 10 15 20 Km

- Active site
- Inactive site
- Silica Sand
 - Silica sand: Jurassic, Osgodby Formation (Burythorpe area only)
 - Silica sand: Carboniferous, Millstone Grit (Blubberhouses only)
- Superficial
 - River Terrace Deposits (including alluvial fan) - Inferred
 - River Terrace Deposits (including alluvial fan) - Indicated
 - Sub-alluvial Deposits - Inferred
 - Sub-alluvial Deposits - Indicated
 - Glacial Sand and Gravel - Indicated
 - Glacial Sand and Gravel - Inferred
- North Yorkshire County Council Boundary
- North Yorkshire County Council Boundary with 1km buffer

Consultation phase maps

These maps are part of the consultation phase that will inform the delineation of Mineral Safeguarding Areas in North Yorkshire. They show geological units from the 'BGS DiGMapGB-50' geological linework and the published North Yorkshire Mineral Resources dataset. This linework will be refined through consultation to incorporate knowledge from stakeholders in order to produce Mineral Safeguarding Area maps.

Sites are from the BGS database of pits called 'BRITPITS'.

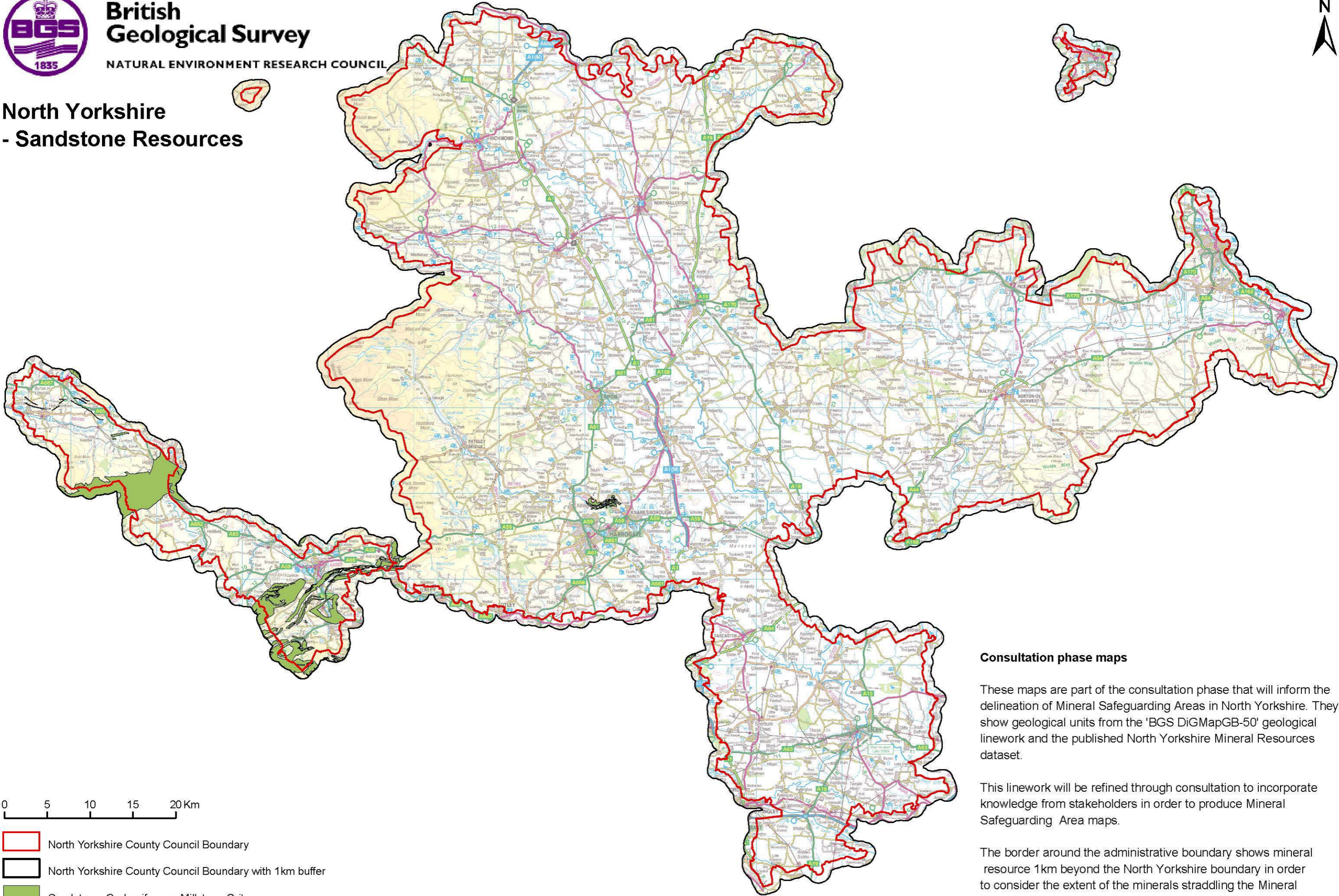
The border around the administrative boundary shows mineral resources 1km beyond the North Yorkshire boundary in order to consider the extent of the minerals straddling the Mineral Planning Authority boundary.



British Geological Survey

NATURAL ENVIRONMENT RESEARCH COUNCIL

North Yorkshire - Sandstone Resources



Consultation phase maps

These maps are part of the consultation phase that will inform the delineation of Mineral Safeguarding Areas in North Yorkshire. They show geological units from the 'BGS DiGMapGB-50' geological linework and the published North Yorkshire Mineral Resources dataset.

This linework will be refined through consultation to incorporate knowledge from stakeholders in order to produce Mineral Safeguarding Area maps.

The border around the administrative boundary shows mineral resource 1km beyond the North Yorkshire boundary in order to consider the extent of the minerals straddling the Mineral Planning Authority boundary.

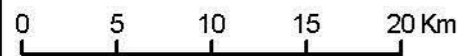
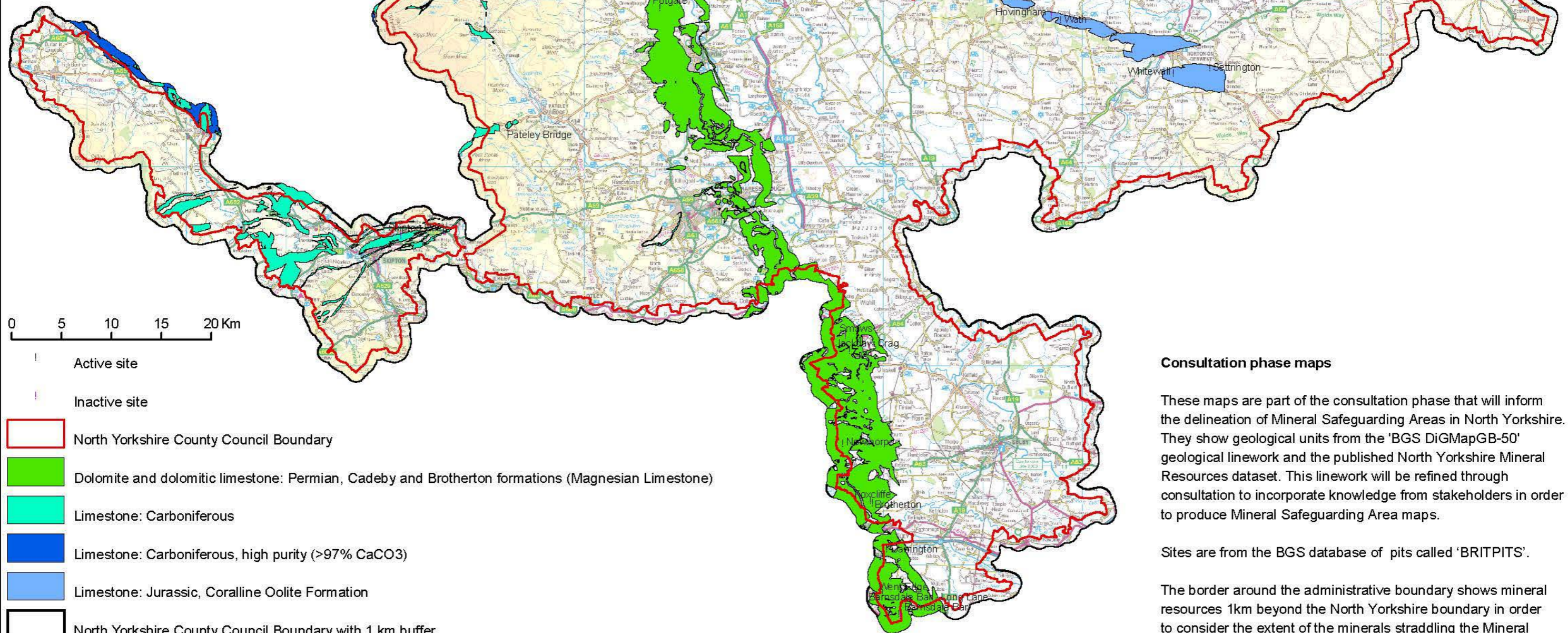
BGS © NERC All rights reserved. Contains Ordnance Survey data © Crown Copyright and database rights 2011.



British Geological Survey

NATURAL ENVIRONMENT RESEARCH COUNCIL

North Yorkshire - Limestone Resources



- Active site
- Inactive site
- North Yorkshire County Council Boundary
- Dolomite and dolomitic limestone: Permian, Cadeby and Brotherton formations (Magnesian Limestone)
- Limestone: Carboniferous
- Limestone: Carboniferous, high purity (>97% CaCO3)
- Limestone: Jurassic, Coralline Oolite Formation
- North Yorkshire County Council Boundary with 1 km buffer

Consultation phase maps

These maps are part of the consultation phase that will inform the delineation of Mineral Safeguarding Areas in North Yorkshire. They show geological units from the 'BGS DiGMapGB-50' geological linework and the published North Yorkshire Mineral Resources dataset. This linework will be refined through consultation to incorporate knowledge from stakeholders in order to produce Mineral Safeguarding Area maps.

Sites are from the BGS database of pits called 'BRITPITS'.

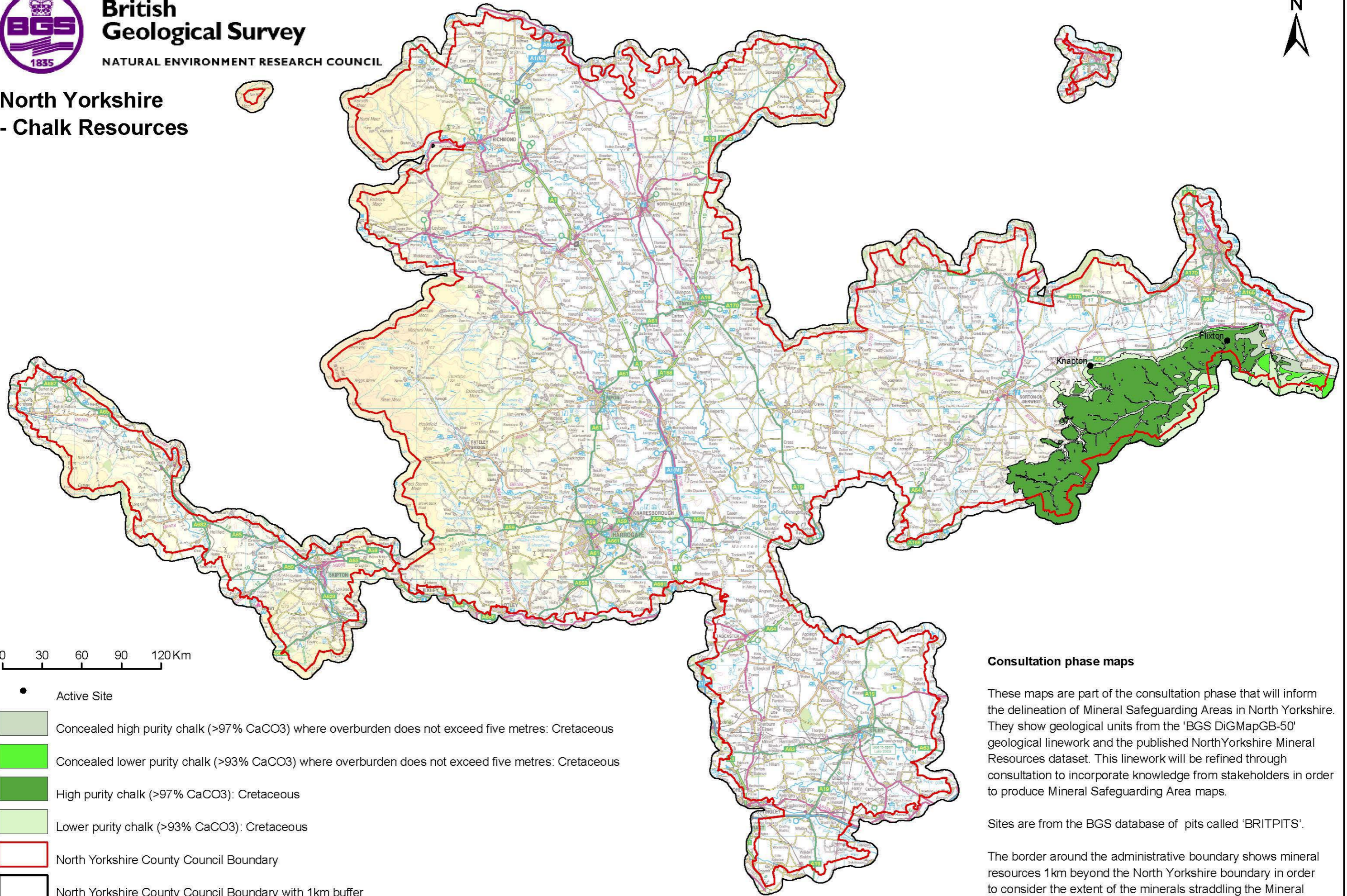
The border around the administrative boundary shows mineral resources 1km beyond the North Yorkshire boundary in order to consider the extent of the minerals straddling the Mineral Planning Authority boundary.









British Geological Survey

NATURAL ENVIRONMENT RESEARCH COUNCIL

North Yorkshire - Chalk Resources



0 30 60 90 120km

- Active Site
-  Concealed high purity chalk (>97% CaCO₃) where overburden does not exceed five metres: Cretaceous
-  Concealed lower purity chalk (>93% CaCO₃) where overburden does not exceed five metres: Cretaceous
-  High purity chalk (>97% CaCO₃): Cretaceous
-  Lower purity chalk (>93% CaCO₃): Cretaceous
-  North Yorkshire County Council Boundary
-  North Yorkshire County Council Boundary with 1km buffer

Consultation phase maps

These maps are part of the consultation phase that will inform the delineation of Mineral Safeguarding Areas in North Yorkshire. They show geological units from the 'BGS DiGMapGB-50' geological linework and the published NorthYorkshire Mineral Resources dataset. This linework will be refined through consultation to incorporate knowledge from stakeholders in order to produce Mineral Safeguarding Area maps.

Sites are from the BGS database of pits called 'BRITPITS'.

The border around the administrative boundary shows mineral resources 1km beyond the North Yorkshire boundary in order to consider the extent of the minerals straddling the Mineral Planning Authority boundary.

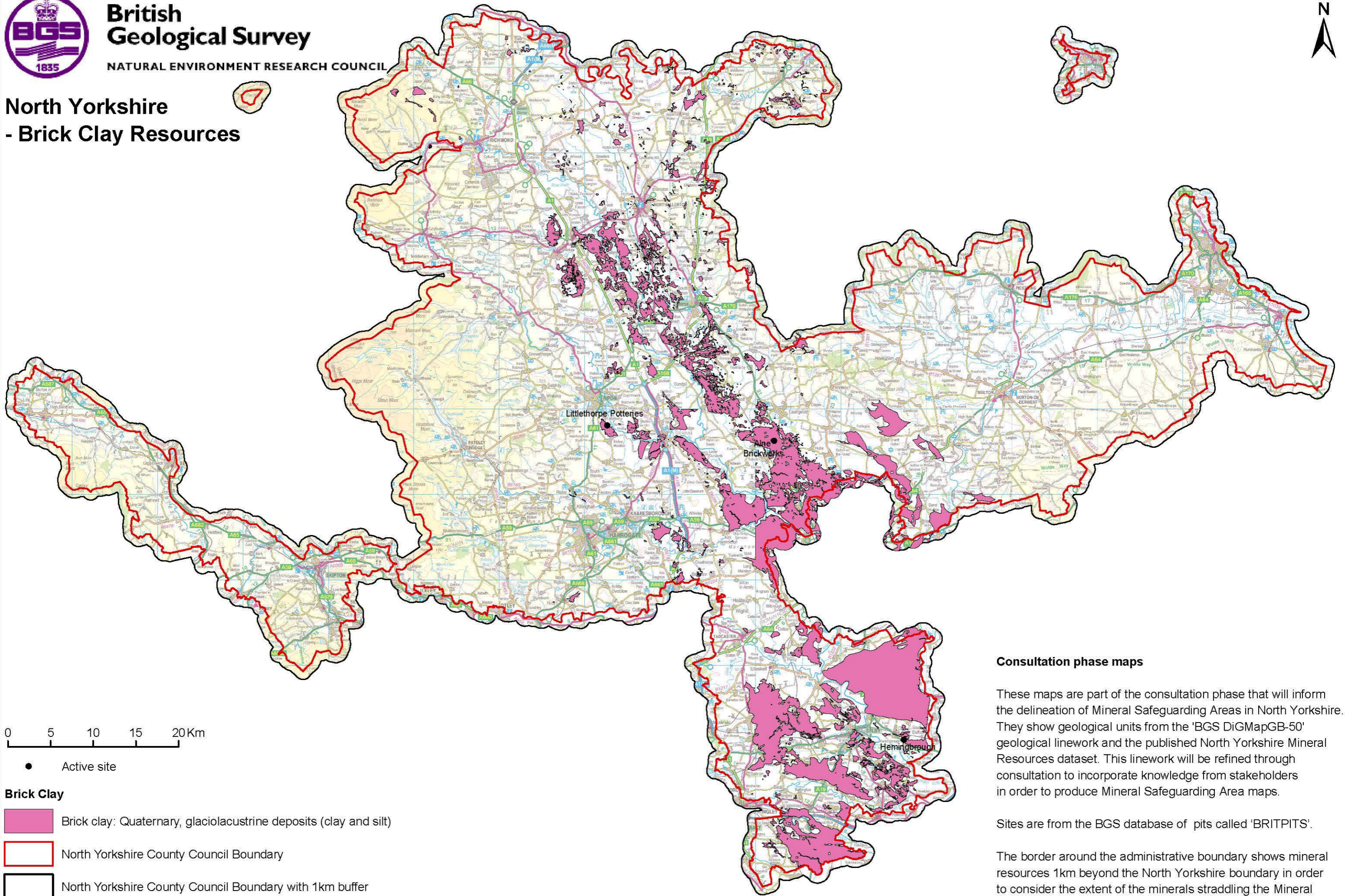
BGS © NERC All rights reserved. Contains Ordnance Survey data © Crown Copyright and database rights 2011.



British Geological Survey

NATURAL ENVIRONMENT RESEARCH COUNCIL


North Yorkshire - Brick Clay Resources





0 5 10 15 20 Km

● Active site

Brick Clay

 Brick clay: Quaternary, glaciolacustrine deposits (clay and silt)

 North Yorkshire County Council Boundary

 North Yorkshire County Council Boundary with 1km buffer

Consultation phase maps

These maps are part of the consultation phase that will inform the delineation of Mineral Safeguarding Areas in North Yorkshire. They show geological units from the 'BGS DiGMapGB-50' geological linework and the published North Yorkshire Mineral Resources dataset. This linework will be refined through consultation to incorporate knowledge from stakeholders in order to produce Mineral Safeguarding Area maps.

Sites are from the BGS database of pits called 'BRITPITS'.

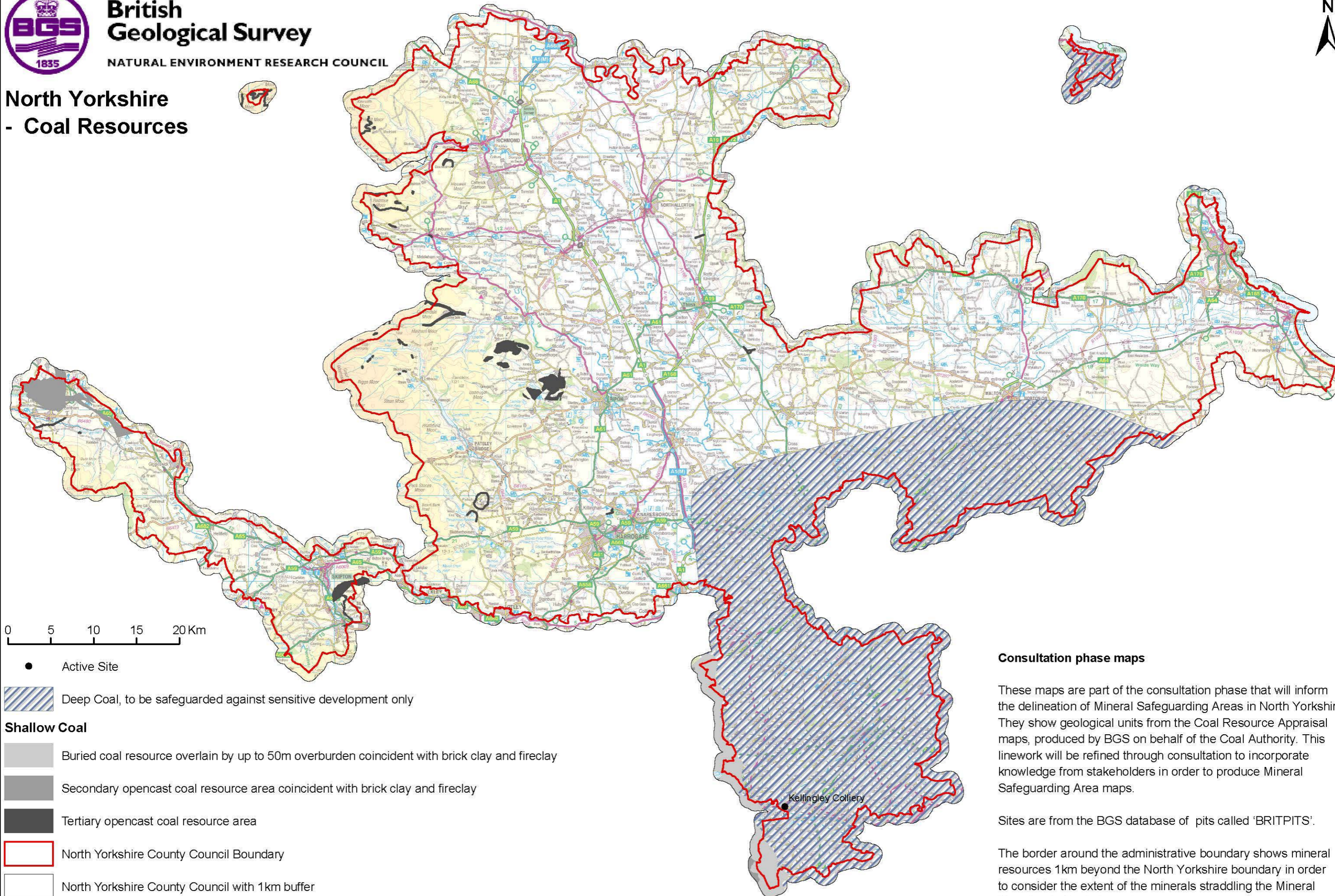
The border around the administrative boundary shows mineral resources 1km beyond the North Yorkshire boundary in order to consider the extent of the minerals straddling the Mineral Planning Authority boundary.



British Geological Survey

NATURAL ENVIRONMENT RESEARCH COUNCIL

North Yorkshire - Coal Resources



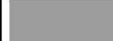
0 5 10 15 20 Km

● Active Site


 Deep Coal, to be safeguarded against sensitive development only


Shallow Coal

 Buried coal resource overlain by up to 50m overburden coincident with brick clay and fireclay

 Secondary opencast coal resource area coincident with brick clay and fireclay

 Tertiary opencast coal resource area

 North Yorkshire County Council Boundary

 North Yorkshire County Council with 1km buffer

Consultation phase maps

These maps are part of the consultation phase that will inform the delineation of Mineral Safeguarding Areas in North Yorkshire. They show geological units from the Coal Resource Appraisal maps, produced by BGS on behalf of the Coal Authority. This linework will be refined through consultation to incorporate knowledge from stakeholders in order to produce Mineral Safeguarding Area maps.

Sites are from the BGS database of pits called 'BRITPITS'.

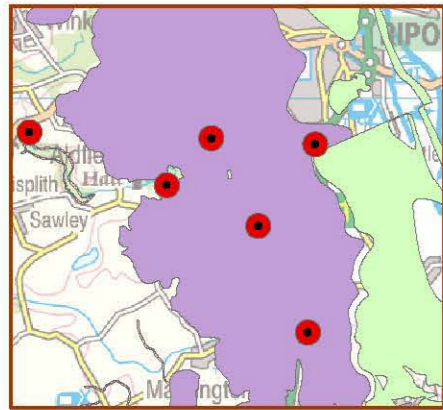
The border around the administrative boundary shows mineral resources 1km beyond the North Yorkshire boundary in order to consider the extent of the minerals straddling the Mineral Planning Authority boundary.



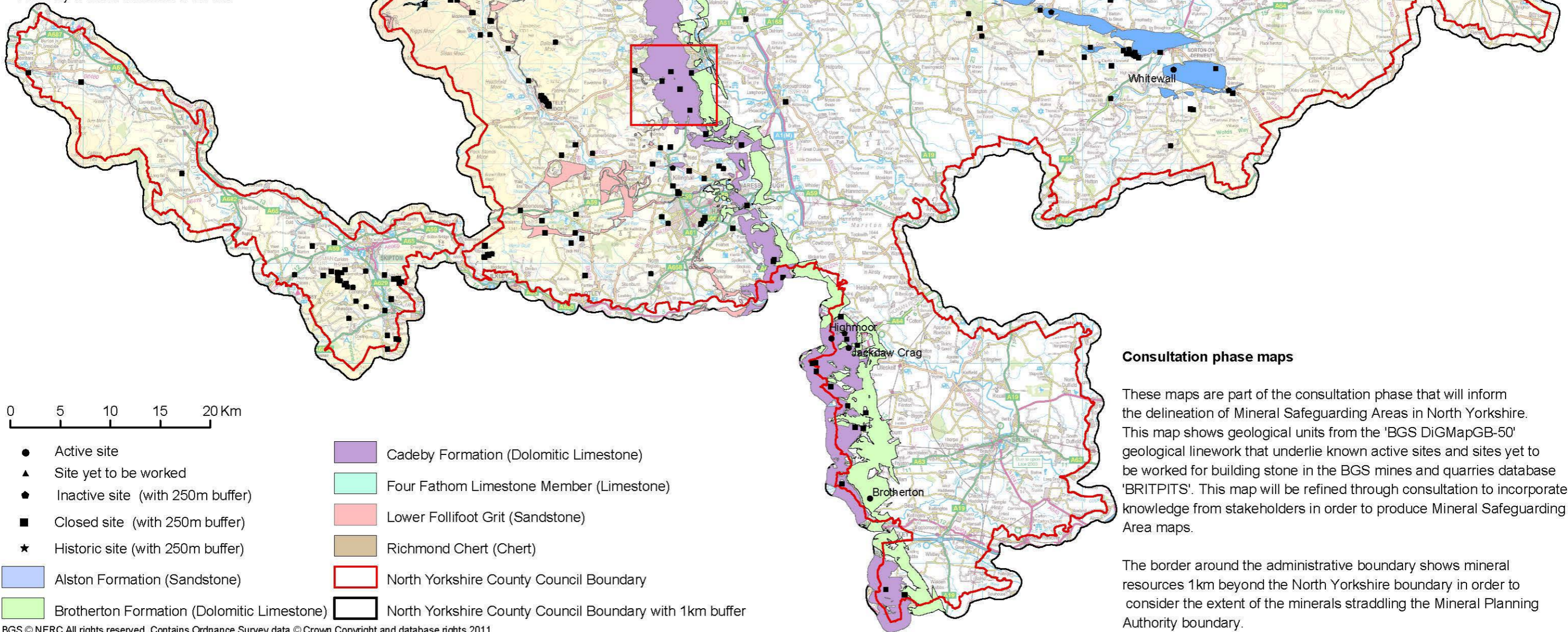
British Geological Survey

NATURAL ENVIRONMENT RESEARCH COUNCIL

North Yorkshire - Building stone resources



Insert shows building stone sites not currently worked buffered to 250m



Consultation phase maps

These maps are part of the consultation phase that will inform the delineation of Mineral Safeguarding Areas in North Yorkshire. This map shows geological units from the 'BGS DiGMapGB-50' geological linework that underlie known active sites and sites yet to be worked for building stone in the BGS mines and quarries database 'BRITPITS'. This map will be refined through consultation to incorporate knowledge from stakeholders in order to produce Mineral Safeguarding Area maps.

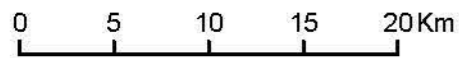
The border around the administrative boundary shows mineral resources 1km beyond the North Yorkshire boundary in order to consider the extent of the minerals straddling the Mineral Planning Authority boundary.



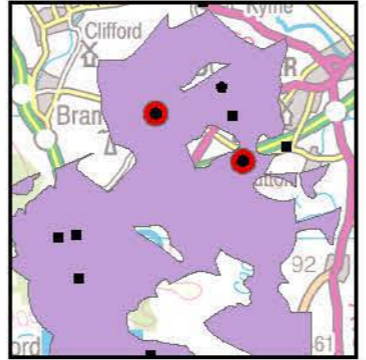
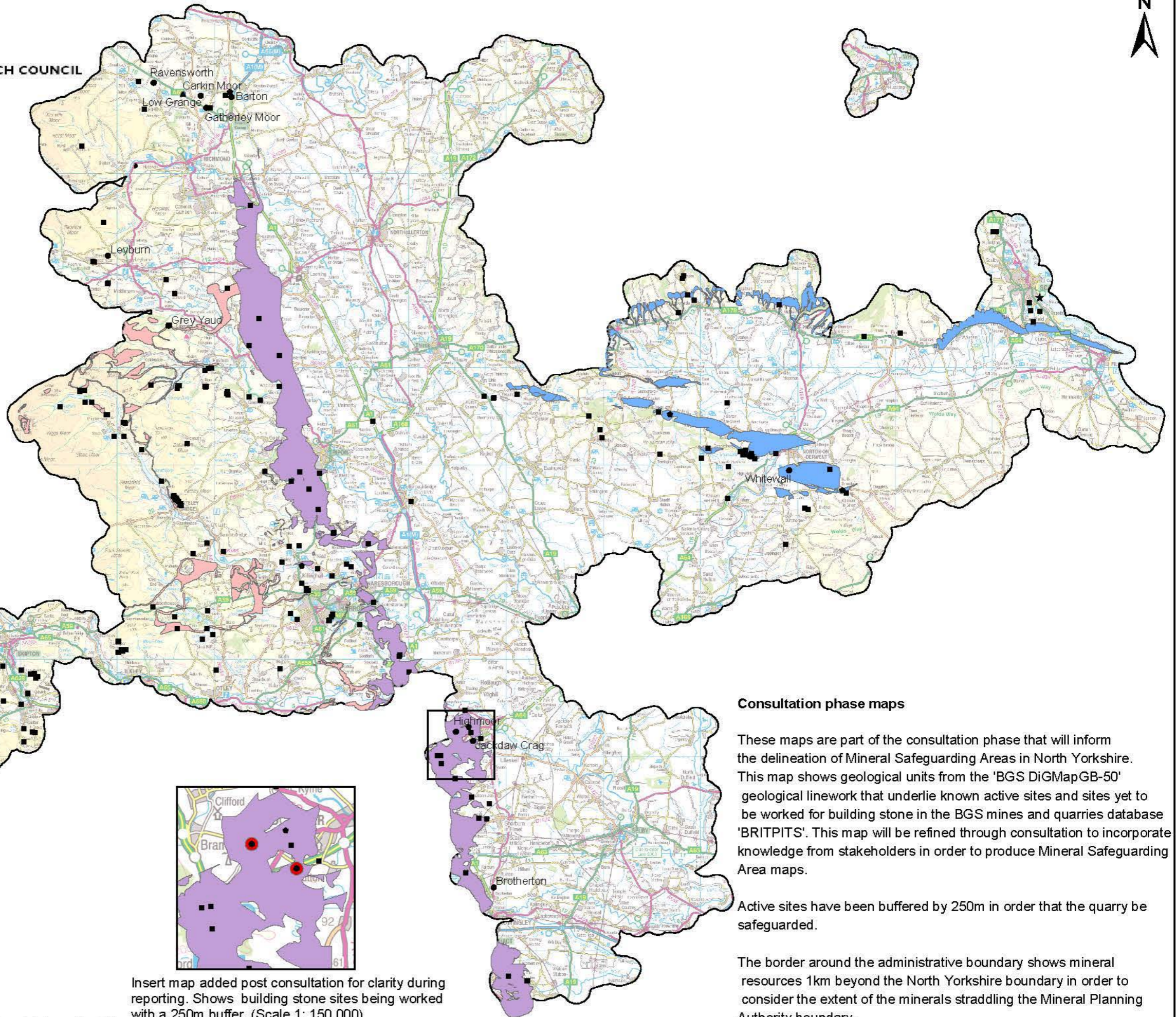
British Geological Survey

NATURAL ENVIRONMENT RESEARCH COUNCIL

North Yorkshire - Building stone resources



- Active site (with 250m buffer)
 - ▲ Site yet to be worked (with 250m buffer)
 - Inactive site
 - Closed site
 - ★ Historic site
- Cadeby Formation (Dolomitic Limestone)
 - Corallian Oolite Formation (Limestone)
 - Lower Follifoot Grit (Sandstone)



Insert map added post consultation for clarity during reporting. Shows building stone sites being worked with a 250m buffer. (Scale 1: 150 000)

Consultation phase maps

These maps are part of the consultation phase that will inform the delineation of Mineral Safeguarding Areas in North Yorkshire. This map shows geological units from the 'BGS DiGMapGB-50' geological linework that underlie known active sites and sites yet to be worked for building stone in the BGS mines and quarries database 'BRITPITS'. This map will be refined through consultation to incorporate knowledge from stakeholders in order to produce Mineral Safeguarding Area maps.

Active sites have been buffered by 250m in order that the quarry be safeguarded.

The border around the administrative boundary shows mineral resources 1km beyond the North Yorkshire boundary in order to consider the extent of the minerals straddling the Mineral Planning Authority boundary.